

Seasonal Discoveries - *Spring*

Stay at Home Field Study!



**Medina County
Park District**

Seasons are the times that nature changes during the year. Plants and animals also change how they live and behave to better survive in each season.

There are four seasons each year. This field study focuses on spring.

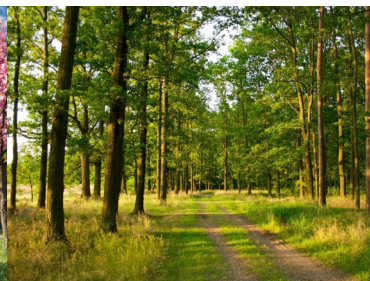
Winter



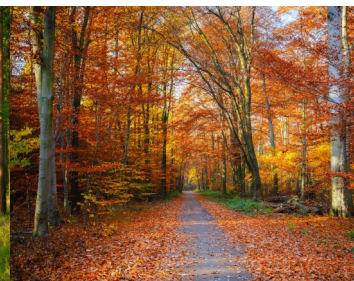
Spring



Summer



Fall





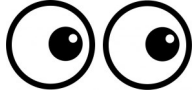





During spring, nature is slowly warming as days become longer. Plants are growing. The grass is a little longer, and leaves are starting to grow on trees. Flowers are even starting to open. Animals are becoming increasingly active. Birds are beginning to chirp and sing. Even the precipitation changes in spring from snow to rain. As nature is rapidly changing during spring, almost every sense can be used to explore the natural world from smelling flowers to feeling raindrops falling.

Seasonal Discoveries Activities

Follow along for activities that you can do in your own home or backyard to learn about the spring season.

Play Seasonal Sense Bingo

When you complete each box, cross it off. When you complete four in a row, you have B-I-N-G-O!

 <p>Smell a Flower</p>	 <p>Listen to a Bird</p>	 <p>Look for a Nest</p>	 <p>Touch a Worm</p>
 <p>Look for Mud</p>	 <p>Touch the Grass</p>	 <p>Smell the Rain</p>	 <p>Listen to a Frog</p>

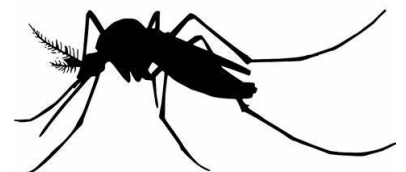
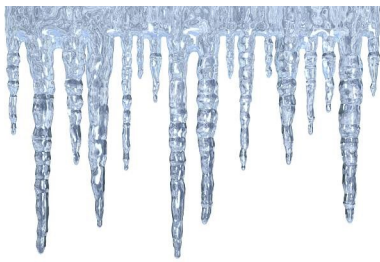
Draw a Picture

After playing Seasonal Bingo, think about all of the spring discoveries that were made. Draw a picture of your favorite spring discovery in the box below.

Draw your picture here:

Spring Guessing Game

These are pictures of things that happen throughout the year. Look at each picture. Think about which season (winter, spring, summer, or fall) the picture belongs in. Circle pictures that are found during spring.



Answer Key

Flower, Nest, Rain Drops, and Frog